

COMMERCIAL

FORT WORTH

PATENT OFFICE

JUN 28 1963

L. Rimbey

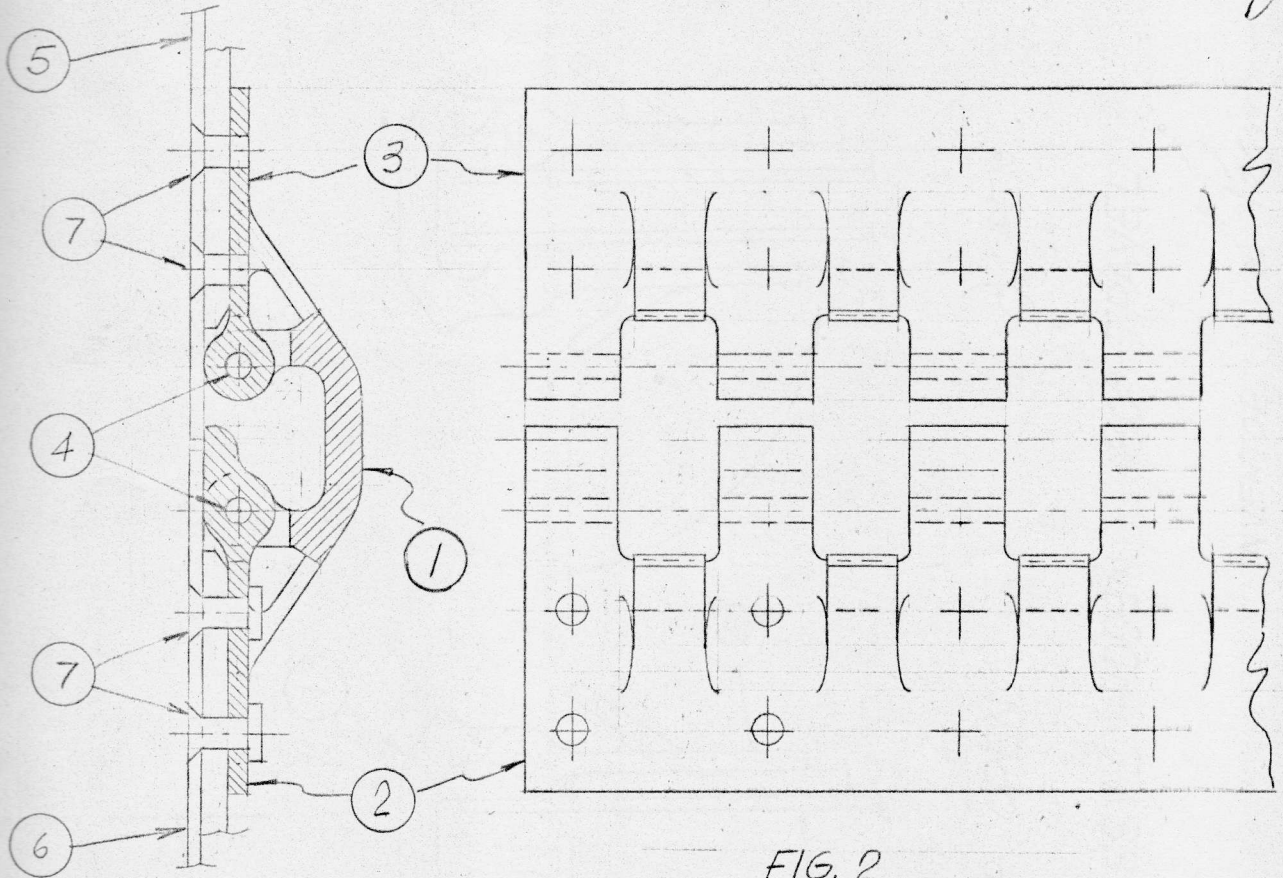


FIG. 1

FIG. 2

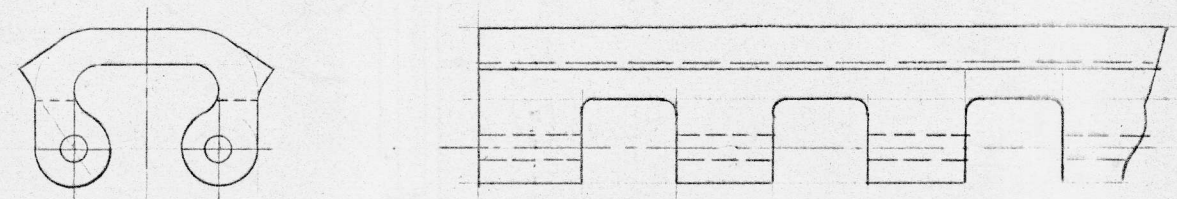


FIG. 3

STRUCTURAL HINGE ASSY - HIDDEN - 180° TRAVEL

INVENTOR: *L. Rimbey*
DATE OF INVENTION: June 28 - 1963

WITNESS: *Ray D. J. ...* 6/28/63 WITNESS: *Frank ...* House 6-28